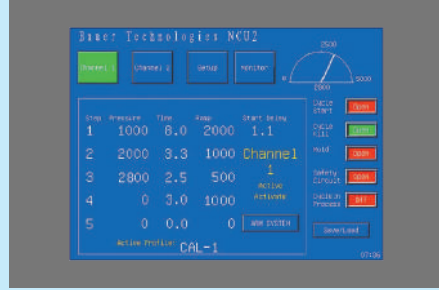


NCU

Nitrogen Control Units





BENEFITS

- › Portable compact design
- › Easily interfaces with any injection molding machine (available euomap 62 interface)
- › 2 or 4 channel configuration available
- › Precise pressure control with True Track Ramping™ and real time monitoring
- › Process parameter storage
- › Can control processes to 2 injection molding machines at the same time
- › Lowest maintenance cost in the industry

GAS INJECTION TECHNOLOGY

- › Reduce Cycle Times
- › Reduce Resin Costs
- › Improve Part Quality
- › Less Tonnage Required

CONTROL SYSTEM

- State-of-the-art control system with intuitive interface allows for simple operation and real-time accurate diagnostics.
- › 10.5" touch-screen color display
 - › Precise electro-pneumatically controlled valves
 - › Accurate control of pressure reduction

COST OF OWNERSHIP

- Like all BAUER compressors, the system is designed for long periods between maintenance intervals and has a very low cost of ownership.
- › Lifetime BAUER support.

NCU

DIMENSIONS L x W x H inches (mm)

- › 17.75 x 12.25 x 15.75 (450 x 311 x 400)

WEIGHT pounds (kg)

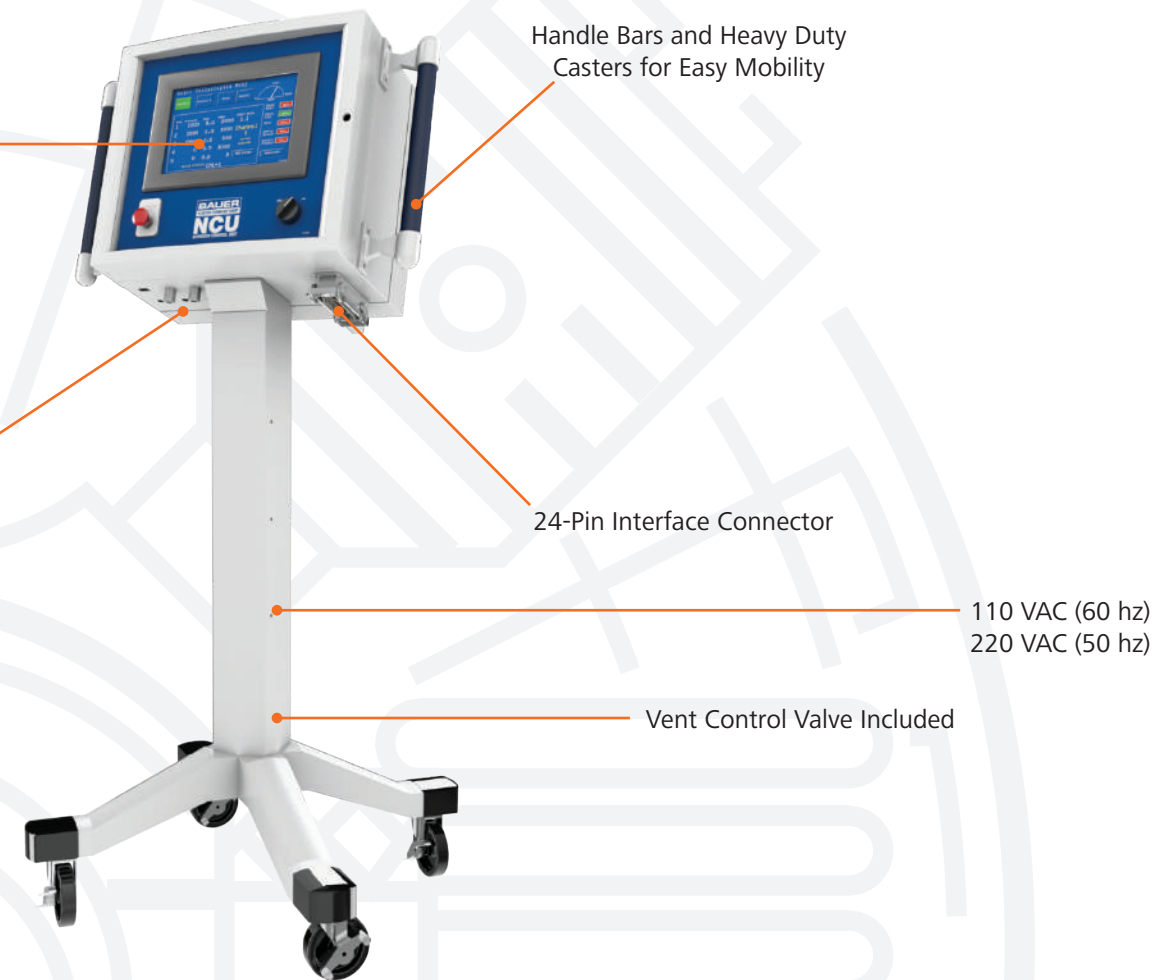
- › 70 (26)

Touch Screen Interface

- › Programmable 5 Step Profiles
- › True Track Ramping™
- › 10 Memory Slots per Channel for Saving "Gas Injection Profiles"
- › Constant Real-Time System Monitoring and Display
- › Automatic Purge Settings
- › 9-Pin Serial Port for Laptop to PLC Access Communication

2 or 4 Channel Outputs

- › MAX 6000 PSI Input, MAX 5000 PSI Output

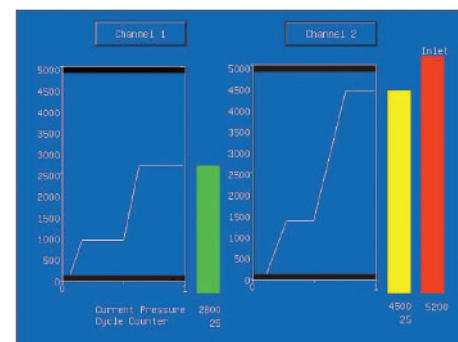


TOTAL PERFORMANCE WARRANTY

- › Superior performance and quality
- › Innovative design
- › Unmatched global support and 24/7 customer service

BAUER COMPRESSORS INC. reputation speaks for itself with over 70 years of market leadership.

ISO 9001:2008; ISO 17025



TRUE TRACK RAMPING™

The outlet pressure is increased at the rate specified by the user/operator on each step of the profile in the Ramp input until the next Pressure input is reached. It should be noted that each profile should finish by decreasing pressure down to 0 psi with the time and ramp set accordingly. This eliminates unnecessary additional profile steps, and allows the increase/decrease of pressure to be uniform and controlled. This provides higher quality molded parts with less defects.